

# Aphra Cheesman Oddments

10 Oct – 9 Nov 2024



**THE NATIONAL**

249 MOORHOUSE AVE | CHRISTCHURCH | NEW ZEALAND  
**+64 3 366 3893** | [INFO@THENATIONAL.CO.NZ](mailto:INFO@THENATIONAL.CO.NZ) | [THENATIONAL.CO.NZ](http://THENATIONAL.CO.NZ)

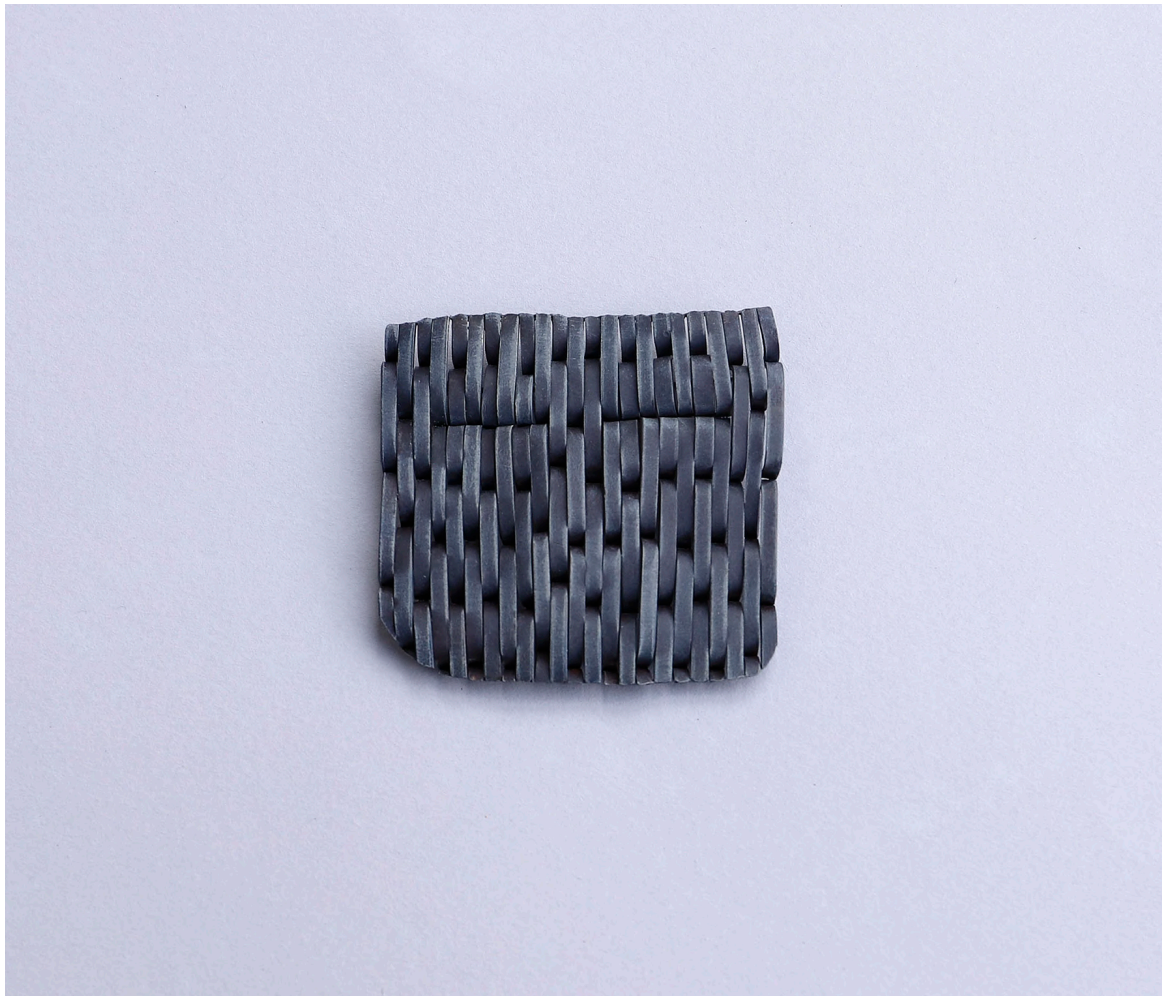
# Aphra Cheesman

“Oddment refers to an ‘item or piece of something, often left over from a larger piece.’ I collect traces of the encounters that have occurred between people and things, gleaning objects and materials that are worn or decayed; signs of their past, and their interactions with people. Many of these works respond to the worn patches in everyday objects such as clothing and furniture. In reconstructing these worn areas, the contact zones over time between the body and object are made tangible”. Aphra Cheesman

Aphra Cheesman lives and works in Naarm, Melbourne. Her practice includes contemporary jewellery, objects, drawing, video and sculpture. Aphra’s work often examines our complex relationships with commonplace materials and objects. She has an ongoing practice of observing and collecting within her own daily life from which her research and creative works often evolve. Aphra graduated with a BA in Fine Art (Honours) from RMIT in 2020. She has exhibited in Australia and internationally and was the recipient of the Talente Gestaltungspreise in 2022.

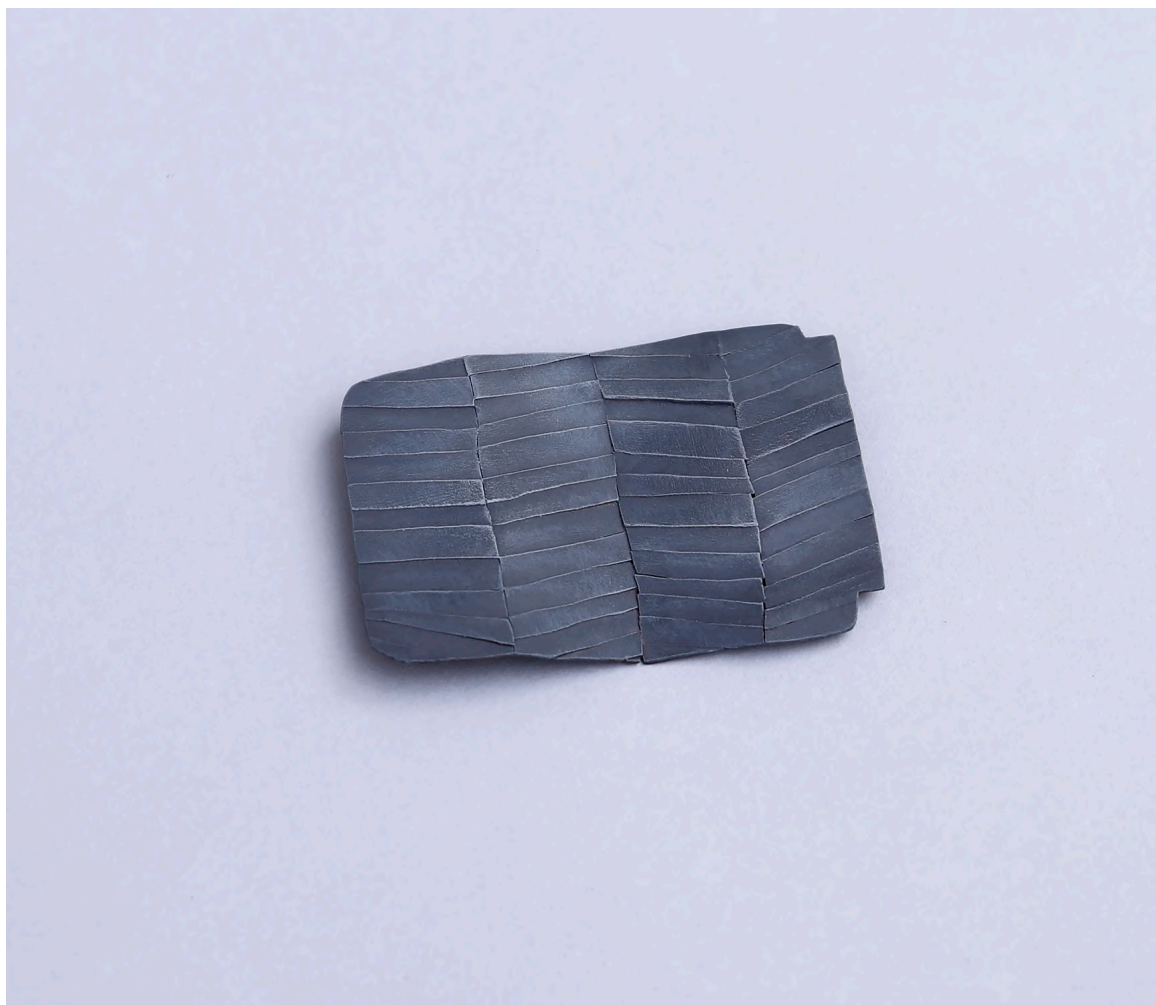
Aphra  
Cheesman

1. Untitled (from 'Holes' series), 2023  
Brooch  
Mild steel, stainless steel  
acrylic paint, enamel paint, wax  
65 x 60 x 5mm  
NZ \$460



Aphra  
Cheesman

2. Untitled (from 'Holes' series), 2023  
Brooch  
Mild steel, stainless steel  
acrylic paint, enamel paint, wax  
75 x 55 x 5mm  
NZ \$545



Aphra  
Cheesman

3. Untitled (from 'Holes' series), 2023  
Double pin  
Mild steel, stainless steel  
acrylic paint, enamel paint, wax  
65 x 45 x 10mm  
NZ \$475



Aphra  
Cheesman

4. **Untitled**, 2023  
Pendant  
Mild steel, stainless steel  
acrylic paint, enamel paint, wax  
140 x 50 x 10mm  
NZ \$460  
SOLD



Aphra  
Cheesman

5. Untitled (from 'Holes' series), 2023

Brooch

Copper, stainless steel  
acrylic paint, enamel paint, wax

70 x 50 x 10mm

NZ \$475



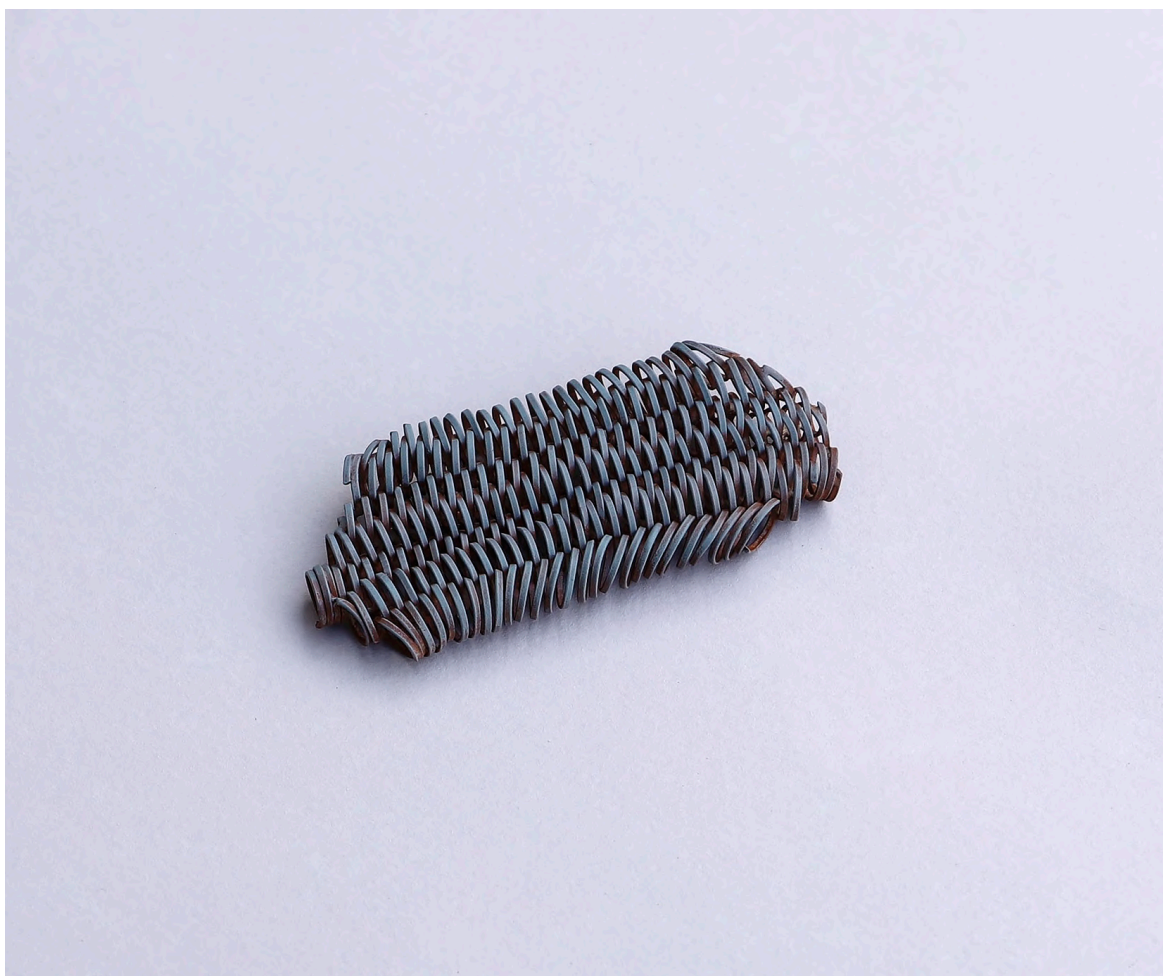
Aphra  
Cheesman

6. Untitled (from 'Holes' series), 2023  
Brooch  
Copper, stainless steel  
acrylic paint, enamel paint, wax  
70 x 50 x 10mm  
NZ \$475



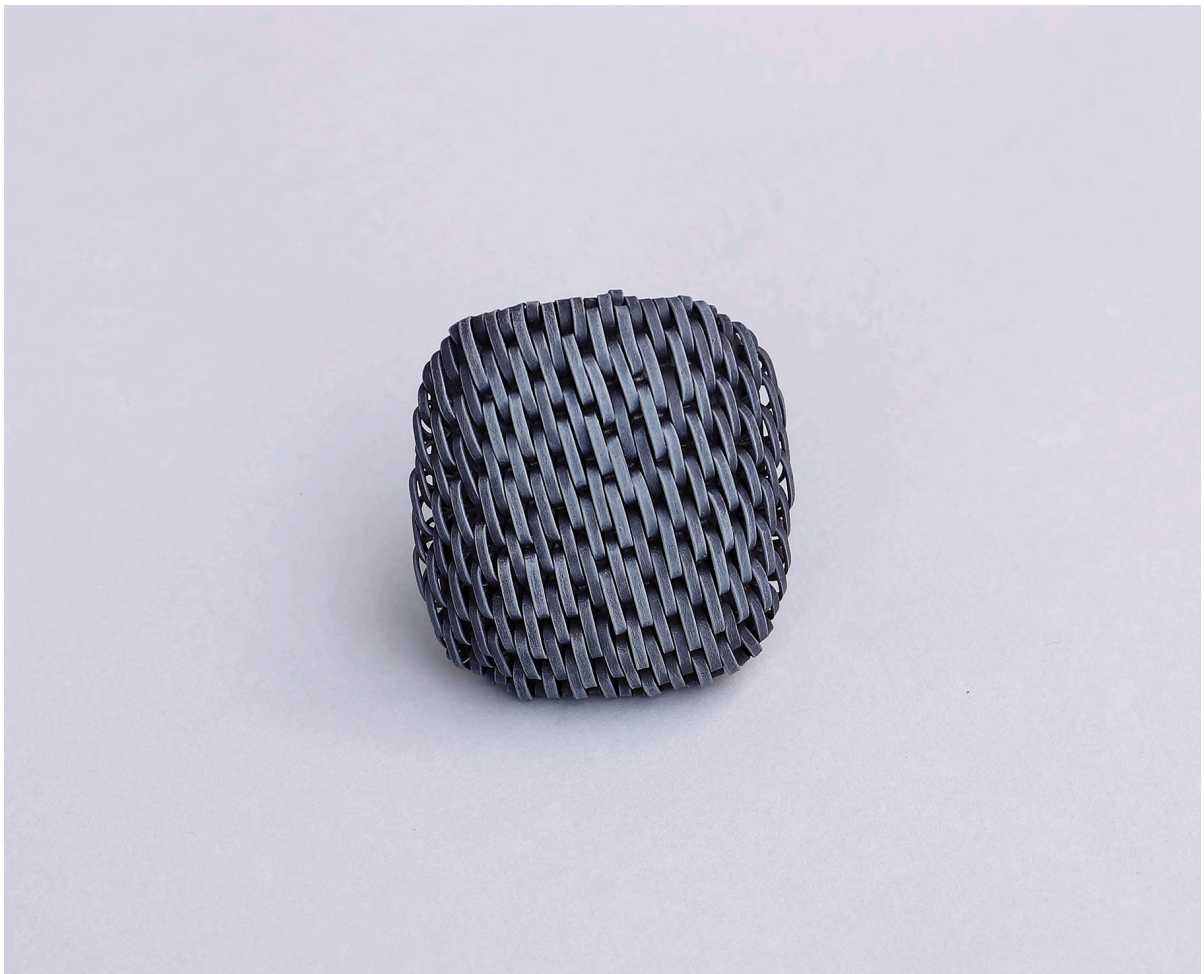
Aphra  
Cheesman

7. Untitled (from 'Holes' series), 2024  
Brooch  
Copper, stainless steel  
acrylic paint, enamel paint, wax  
90 x 40 x 10mm  
NZ \$425  
SOLD



Aphra  
Cheesman

8. Untitled (from 'Holes' series), 2023  
Brooch  
Copper, stainless steel  
acrylic paint, enamel paint, wax  
70 x 65 x 10mm  
NZ \$970



Aphra  
Cheesman

9. **Untitled**, 2024  
Brooch/object  
Mild steel, stainless steel  
acrylic paint, enamel paint, wax  
125 x 85 x 10mm  
NZ \$700  
SOLD



Aphra  
Cheesman

10. **Untitled**, 2024  
Object/wall piece  
Mild steel, stainless steel  
acrylic paint, enamel paint, wax  
150 x 110 x 10mm  
NZ \$650  
SOLD



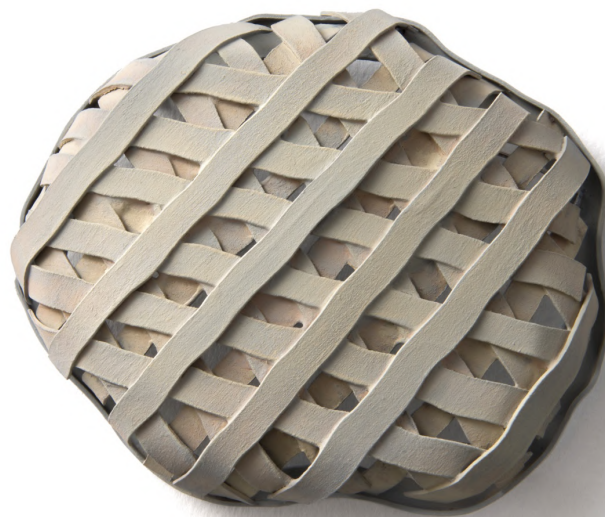
Aphra  
Cheesman

11. **Untitled**, 2024  
Brooch/object  
Mild steel, stainless steel  
acrylic paint, enamel paint, wax  
125 x 85 x 10mm  
NZ \$700



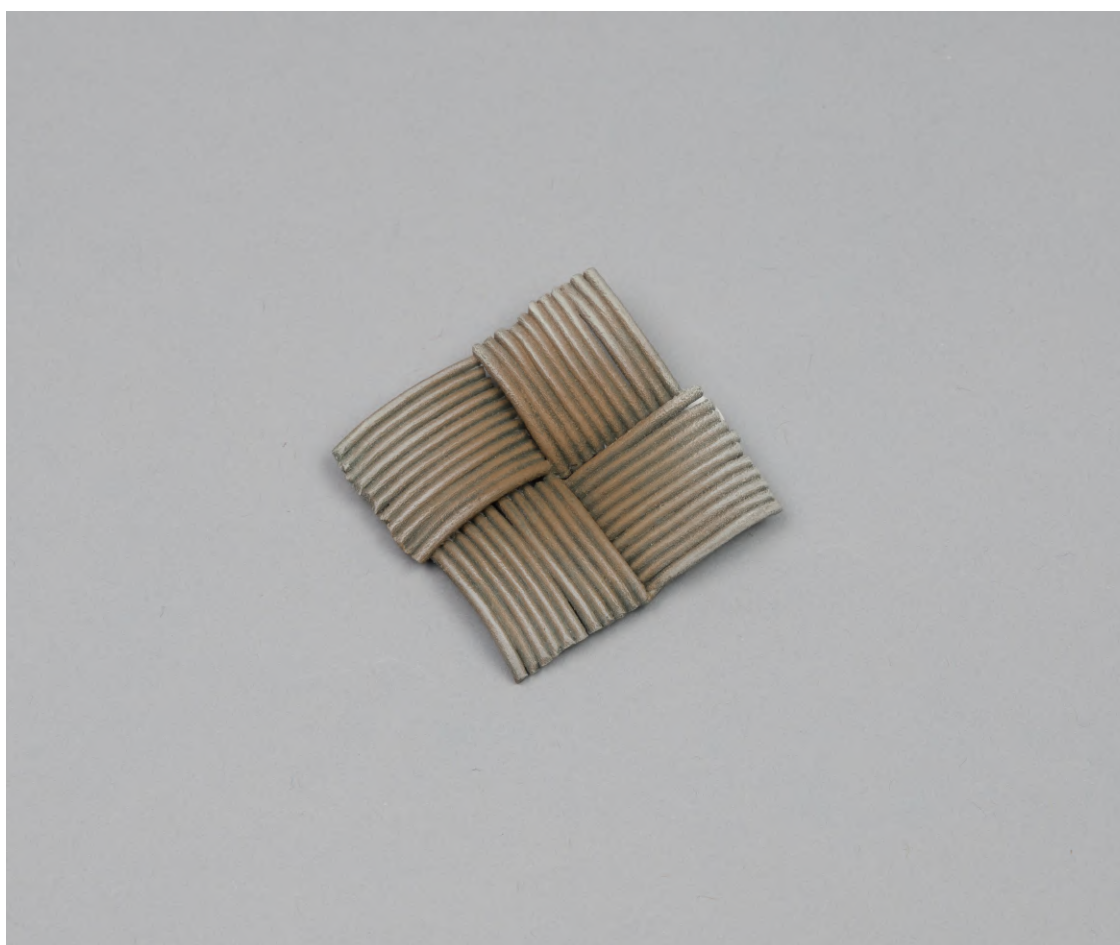
Aphra  
Cheesman

12. Hole in my jumper, 2020  
Brooch  
Stainless steel, mild steel  
acrylic paint, enamel paint, wax  
70 x 60 x 20mm  
NZ \$565



Aphra  
Cheesman

13. Untitled (from 'Holes' series), 2023  
Brooch  
Copper, sterling silver, stainless steel  
acrylic paint, enamel paint, wax  
37 x 37 x 8mm  
NZ \$335  
SOLD



Aphra  
Cheesman

14. Untitled (from 'Holes' series), 2023

Brooch

Sterling silver, stainless steel  
acrylic paint, enamel paint, wax

50 x 55 x 8mm

NZ \$335



Aphra  
Cheesman

15. **Switch Neckpiece**, 2018  
Blackened mild steel, sterling silver,  
felt, electrical cord  
20 x 17mm. Length 750mm  
NZ \$1,930



Aphra  
Cheesman

16. Switchboard Pendant, 2020  
Blackened mild steel, sterling silver  
electrical cord  
110 x 110mm. Length 700mm  
NZ \$850

